

# UCLA Extension 2019 Summer On-Campus Housing Information

- |  |  |
|--|--|
| <ul style="list-style-type: none"> <li>☺ <a href="#">General Housing Information</a></li> <li>☺ <a href="#">Tips to Choosing Housing</a></li> <li>☺ <a href="#">Summer Pricing</a></li> <li>☺ <a href="#">How to Apply</a></li> <li>☺ <a href="#">Housing Confirmation &amp; Check-In</a></li> <li>☺ <a href="#">Meal Plans</a></li> <li>☺ <a href="#">Front Desk</a></li> </ul> | <ul style="list-style-type: none"> <li>☺ <a href="#">Life in the Residence Halls</a></li> <li>☺ <a href="#">Resident Assistant (RA) and Resident Director (RD)</a></li> <li>☺ <a href="#">Transportation</a></li> <li>☺ <a href="#">Other Helpful Resources</a></li> <li>☺ <a href="#">FAQs</a></li> </ul> |
|--|--|

## General Housing Information

- Housing information is available on the UCLA Housing website (<https://housing.ucla.edu/>).
- **Housing availability is on a first-come, first-served basis.** Since UCLA housing fills up quickly, we recommend that you apply as early as possible to be guaranteed a room.
- Requests for a specific roommate require *you and your desired roommate* to **request each other** when applying for housing online.

## How to Apply for On-Campus Housing

- All students will need to **obtain a UCLA ID** number from the American Language Center (*this is different from your UCLA Extension ID number*). Our office will provide you with a UCLA Student ID number by email approximately **2 weeks after you have enrolled** in a *full-time* summer intensive English program.
- Once you have obtained your UCLA ID number, please [setup your UCLA Student Login](#).
- Log into the [UCLA Summer Housing website](#) to reserve and pay for housing.

## Housing Confirmation & Check-In

- After paying for your on-campus housing, you can log in to view your housing confirmation on the housing website.
- You will receive your room assignment by email about **2 weeks before you check in**.
- The recommended **check-in time is between 3pm and 8pm** on the Sunday at the start of your housing contract.
- On check-in day there is a short orientation as well as a campus tour given at various times in the afternoon.

## Tips to Choosing Housing

1. Determine which program you are enrolling into:
  - [Academic Intensive English Program \(AIEP\)](#)
  - [Intensive English Communication Program \(IECP\)](#)
2. Determine which program offering(s) you are enrolling into:

	Session	Start	End	Housing Check-In	Housing Check-Out
AIEP	A	June 24	September 13	Sunday, June 23	Friday, September 13
	B	June 24	August 2	Sunday, June 23	Friday, August 2
	C	August 5	September 13	Sunday, August 4	Friday, September 13
IECP	11	July 1	September 13	Sunday, June 30	Friday, September 13
	A	July 1	July 25	Sunday, June 30	Friday, July 26
	B	July 29	August 22	Sunday, July 28	Friday, August 23
	C	August 26	September 13	Sunday, August 25	Friday, September 13

3. Review all the summer on-campus [housing facilities](#), [prices](#) and [meal plan](#) options available. Consider your budget as you go through each of the following steps.
4. Select an on-campus [housing facility](#):
  - Classic Residence Hall - *Hedrick Hall (HED)*

- Residential Suite - *Hitch Suites (HT)*
- 5. Select a room option:
  - Double – a shared room with two beds.
  - Triple – a shared room with three beds (one bunk bed and one single bed)
- 6. Select a [meal plan](#):
  - 21 Meals per week
  - 15 Meals per week
  - 11 Meals per week

## Meal Plans

- For added convenience, the UCLA Housing Office offers several meal plan options. Meal plans are selected at the time you accept your housing offer and make your initial contract payment. Meal plans are mandatory for on-campus housing.
- Meal plans start on Monday and end on Sunday. Meals do not roll over. **Any meal credits not used by the end of the week will be lost.** Please note that only dinner will be available on the Sunday of check-in.
- Summer meal plans provide options:
  - 21 Meals per week
  - 15 Meals per week
  - 11 Meals per week
- During [breakfast hours](#), you can prepare a sack lunch of pre-packaged food items at [Café 1919](#). *One sack lunch = one meal.*
- You may choose to upgrade from a lower meal plan to a higher meal plan after your contract is active. To upgrade you will need to pay the difference in cost, plus a \$25 processing fee. *You will not be able to downgrade from a higher meal plan to a lower meal plan.*
- Check out our video preview of [UCLA dining services](#). Please note that summer meal plans are limited to specified on-campus dining locations. Summer dining will begin at [FEAST at Rieber and Rendezvous](#). Please note that dining locations may be subject to change without notice.
- Vegetarian, vegan, [kosher and halal](#) options are always available in dining halls.

## Front Desk

- The Front desk is located in the lobby area of the Hedrick Hall. There is staff available to assist you 24 hours a day, 7 days a week.
- The front desk staff can provide the following free services:
  - Maintenance/Repairs for your room
  - Extra blankets
  - Access to private study and music rooms
  - Access to the TV lounge
  - Equipment for the game room
  - Directions and information about local areas

## Resident Assistant and Resident Director

- Each floor has a Resident Assistant (RA) available to answer questions and assist you with on-campus living situations, including roommate conflicts (communication issues, noises, or guests staying overnight without permission).
- Resident Directors (RD) supervise the RAs and can also help resolve problems and handle conduct issues.
- **You cannot change or switch rooms without the approval of your RA or RD.**

## Life in the Residence Halls

- Take a [video tour](#) of UCLA's residence hall buildings.
- Check out this video preview of [life on the hill](#).
- Review our [residence rules](#).
- **UCLA is smoke-free and tobacco-free:** The use of cigarettes, cigars, chewing tobacco and all other tobacco products, *as well as electronic cigarettes*, is prohibited on UCLA's campus, including UCLA housing. No smoking is allowed inside or outside UCLA and UCLA Extension buildings.
- Wi-Fi services are available at all UCLA facilities and may require a UCLA Student Login. Please watch [UCLA's file sharing video](#) before utilizing these Wi-Fi services.

#### Transportation to UCLA Extension Lindbrook Center

- Bus: Take Metro black bus line #734 from Sunset and Bellagio, or Metro white bus line #2/302 from Gayley and Landfair (about 20 minutes).
- Bike: Ride down De Neve and Gayley until you reach Lindbrook (about 6 minutes). There are over 2,900 free bike parking spaces in racks all over campus.
- Walking: Walk down De Neve and Galeley until you reach Lindbrook (about 30 minutes).
- Rideshare Service: This will cost about \$4-\$8 one way (about 8-10 minutes, plus wait time).

#### Transportation to around Westwood Village and Los Angeles

- Bruin Bus: Take the free Bruin Bus to libraries and points of interest at UCLA and into Westwood Village. Review the [route map](#) for hours and stops.
- City buses and Metro Rail: Purchase a pass to Metro, Culver City and/or Santa Monica bus lines. [Click here](#) for more details about city bus fares.
- Rideshare Service: [Lyft](#) and [Uber](#) provide affordable rideshare services for short trips.

#### Other Helpful Resources

- Try the [UCLA Housing Tour](#) to explore Hedrick Hall and Hitch Suites or take the [YouVisit virtual walking tour](#) of UCLA's on-campus housing area.
- Visit the [UCLA Tips](#) student-run blog for an extensive overview of campus housing benefits and visit the [UCLA On The Hill](#) blog for tips on living on-campus.
- Watch this [student's easy breakdown](#) of on-campus housing options. *Before viewing the video, please note the limited [summer housing options](#).*
- Wondering what to bring? Check out this [helpful list](#) of what to pack and what to buy, and review the [residential regulations](#) for what to leave behind.
- Review this list of suggested [items to bring or purchase](#) for school and living in residence halls.
- Find dining hall menus, events on and off campus, Bruin Bus schedules and more with the [UCLA mobile app](#).

## UCLA Summer Housing Comparison

	UCLA HEDRICK RESIDENCE HALL	UCLA HITCH RESIDENCE SUITES
Distance to classrooms	1.93 km	2.09 km
24-Hour Front Desk Service	Yes	At Hedrick Hall
Accessible Microwave	Yes	Yes
Air Conditioning	No	No
ATM Machines	Lobby Area	At Hedrick Hall
Community Bathrooms	Yes	Shared Bathroom
Community Kitchen	No	Yes
Computer Labs	No	No
Computer Network Connection/ Internet	(Ethernet Cable or wireless access card required)	(Ethernet Cable or wireless access card required)
Elevators	Yes	No
Fitness Room	Yes	At Hedrick Hall
Gym Equipment	Yes	Outdoor Only
Key Card for Entry Access	Yes	Yes
Laundry Rooms	Laundromat (Guest BruinCard required)	Laundromat (Guest BruinCard required)
Living Room	No	Yes
Meal Plan (Residential Restaurant or Café)	Yes	Yes
Monitored Evening Access	Yes	No
Multipurpose / Study Lounge	Yes	Yes
Music Rooms	Yes	At Hedrick Hall
Non-Smoking	Yes	Yes
Private Entry	-	Yes
Recreation / Game Rooms	Yes	At Hedrick Hall
Study Rooms	Yes	At Hitch Commons
Vending Machines	Yes	Yes
Other	-	Basketball Courts*
More information	<a href="#">Hedrick Hall</a> <a href="#">Student Video Tour</a> <a href="#">Study and Dining Room Photos</a>	<a href="#">Hitch Suites</a> <a href="#">Student Video Tour</a> <a href="#">Arch Daily article</a>

\*Equipment not included.

# Summer On-Campus Housing Buildings

Click here for more information about [Hedrick Hall](#) and [Hitch Suites](#).

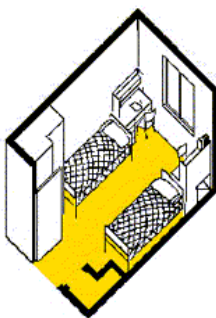
## UCLA Summer Residence Halls

### Is the residence hall a co-ed buildings?

Yes. Students in the residence halls live on co-ed floors with separate male and female restrooms that include private shower facilities.

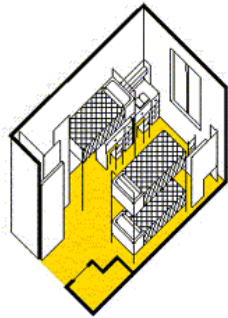
### What is in each room?

Residence hall rooms are carpeted, and each student has a desk, chair, bookcase, and closet space with drawers. Each student will have a twin bed with 1 pillow, 1 pillow case, 1 top sheet, 2 blankets, and 1 towel.



Double Occupancy

*Two (2) students  
per unit in total*



Triple Occupancy

*Three (3) students  
per unit in total*

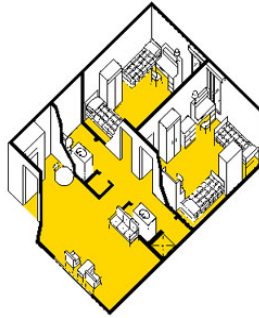
## UCLA Summer Residence Suites

### Can I choose the building where I will stay?

No. Your building assignment will be determined by UCLA Housing.

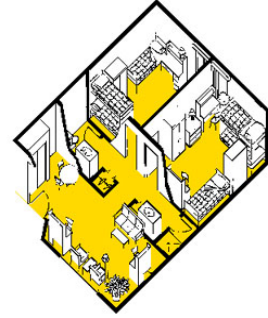
### What is included in the residence suite?

Rooms and suites are carpeted, and each student has use of a twin bed, desk, chair, bookcase, and drawer space. Suite bedrooms are shared by either two or three students. All suites have chairs, coffee tables, and a sofa in the living room. Each student will have a twin bed with 1 pillow, 1 pillow case, 1 top sheet, 2 blankets, and 1 towel.



Double Occupancy

*Four (4) students  
per unit in total*



Triple Occupancy

*Six (6) students per  
unit in total*

## On-Campus Summer Meal Plan Dining Locations

All on-campus housing contracts include a meal plan. Students may use their meal cards at these UCLA cafeteria style dining locations. Simply hand your card to the cashier as you enter. The cashier will swipe your card and meals will be deducted from your meal plan. Visit the [UCLA Dining Services](#) webpage for details on daily menus, service hours, nutrition details and assistance for dietary restrictions.

***\*Please note that dining locations may be subject to change without notice.***



Located in Rieber Hall, FEAST's self-service stations feature rotating menus.



Located in Rieber Court, Rendezvous features rotating menus with dine-in and to-go options.



Located in Delta Terrace, Café 1919 is the spots for to-go sack lunches with pre-packaged food items.



## On-Campus Summer Pricing Academic Intensive English Program (AIEP) Sessions

AIEP Summer 2019 Session A June 24 – September 13 Check-in June 23/Check-out September 13			
	Room Type	Meal Plan	Contract Total
<b>CLASSIC RESIDENTIAL HALL HEDRICK HALL (HED)</b>	Triple	21 Meals	\$5,036.44
	Triple	15 Meals	\$4,359.94
	Triple	11 Meals	\$3,970.44
	Double	21 Meals	\$6,245.94
	Double	15 Meals	\$5,569.44
	Double	11 Meals	\$5,179.94
<b>RESIDENTIAL SUITE HITCH SUITES (HT)</b>	Triple	21 Meals	\$6,245.94
	Triple	15 Meals	\$5,569.44
	Triple	11 Meals	\$5,179.94
	Double	21 Meals	\$7,475.94
	Double	15 Meals	\$6,799.44
	Double	11 Meals	\$6,409.94

Use the UCLA Map app to find your way around campus. Find it on [Itunes](#) or [Google Play!](#)



AIEP Summer 2019 Session B June 24 – August 2 Check-in June 23/Check-out August 2			
	Room Type	Meal Plan	Contract Total
<b>CLASSIC RESIDENTIAL HALL HEDRICK HALL (HED)</b>	Triple	21 Meals	\$2,456.80
	Triple	15 Meals	\$2,126.80
	Triple	11 Meals	\$1,936.80
	Double	21 Meals	\$3,046.80
	Double	15 Meals	\$2,716.80
	Double	11 Meals	\$2,526.80
<b>RESIDENTIAL SUITE HITCH SUITES (HT)</b>	Triple	21 Meals	\$3,046.80
	Triple	15 Meals	\$2,716.80
	Triple	11 Meals	\$2,526.80
	Double	21 Meals	\$3,646.80
	Double	15 Meals	\$3,316.80
	Double	11 Meals	\$3,126.80

AIEP Summer 2019 Session C August 5 – September 13 Check-in August 4/Check-out September 13			
	Room Type	Meal Plan	Contract Total
<b>CLASSIC RESIDENTIAL HALL HEDRICK HALL (HED)</b>	Triple	21 Meals	\$2,456.80
	Triple	15 Meals	\$2,126.80
	Triple	11 Meals	\$1,936.80
	Double	21 Meals	\$3,046.80
	Double	15 Meals	\$2,716.80
	Double	11 Meals	\$2,526.80
<b>RESIDENTIAL SUITE HITCH SUITES (HT)</b>	Triple	21 Meals	\$3,046.80
	Triple	15 Meals	\$2,716.80
	Triple	11 Meals	\$2,526.80
	Double	21 Meals	\$3,646.80
	Double	15 Meals	\$3,316.80
	Double	11 Meals	\$3,126.80

**\*Please note that not all rooms will look exactly the same as those provided in the sample tours and photos. Meal plan options will be restricted to specifically assigned residential restaurant locations.**

## On-Campus Summer Pricing Intensive English Communication Program (IECP) Sessions

IECP Summer 2019 Session A July 1 – July 25 Check-in June 30/Check-out July 26			
	Room Type	Meal Plan	Contract Total
CLASSIC RESIDENTIAL HALL HEDRICK HALL (HED)	Triple	21 Meals	\$1,596.92
	Triple	15 Meals	\$1,382.42
	Triple	11 Meals	\$1,258.92
	Double	21 Meals	\$1,980.42
	Double	15 Meals	\$1,765.92
	Double	11 Meals	\$1,642.42
RESIDENTIAL SUITE HITCH SUITES (HT)	Triple	21 Meals	\$1,980.42
	Triple	15 Meals	\$1,765.92
	Triple	11 Meals	\$1,642.42
	Triple	21 Meals	\$2,370.42
	Triple	15 Meals	\$2,155.92
	Triple	11 Meals	\$2,032.42

IECP Summer 2019 Session B July 29 – August 22 Check-in July 28/Check-out August 23			
	Room Type	Meal Plan	Contract Total
CLASSIC RESIDENTIAL HALL HEDRICK HALL (HED)	Triple	21 Meals	\$1,596.92
	Triple	15 Meals	\$1,382.42
	Triple	11 Meals	\$1,258.92
	Double	21 Meals	\$1,980.42
	Double	15 Meals	\$1,765.92
	Double	11 Meals	\$1,642.42
RESIDENTIAL SUITE HITCH SUITES (HT)	Triple	21 Meals	\$1,980.42
	Triple	15 Meals	\$1,765.92
	Triple	11 Meals	\$1,642.42
	Triple	21 Meals	\$2,370.42
	Triple	15 Meals	\$2,155.92
	Triple	11 Meals	\$2,032.42

IECP Summer 2019 Session C August 26 – September 13 Check-in August 25/Check-out September 13			
	Room Type	Meal Plan	Contract Total
CLASSIC RESIDENTIAL HALL HEDRICK HALL (HED)	Triple	21 Meals	\$1,166.98
	Triple	15 Meals	\$1,010.23
	Triple	11 Meals	\$919.98
	Double	21 Meals	\$1,447.23
	Double	15 Meals	\$1,290.48
	Double	11 Meals	\$1,200.23
RESIDENTIAL SUITE HITCH SUITES (HT)	Triple	21 Meals	\$1,447.23
	Triple	15 Meals	\$1,290.48
	Triple	11 Meals	\$1,200.23
	Triple	21 Meals	\$1,732.23
	Triple	15 Meals	\$1,575.48
	Triple	11 Meals	\$1,485.23

*See next page for combination IECP session housing prices.*

**\*Please note that not all rooms will look exactly the same as those provided in the sample tours and photos. Meal plan options will be restricted to specifically assigned residential restaurant locations.**



## On-Campus Summer Pricing Intensive English Communication Program (IECP) Session Combinations

IECP Summer 2019 Sessions A & B July 1 - August 22 Check-in June 30/Check-out August 23			
	Room Type	Meal Plan	Contract Total
CLASSIC RESIDENTIAL HALL HEDRICK HALL (HED)	Triple	21 Meals	\$3,316.68
	Triple	15 Meals	\$2,871.18
	Triple	11 Meals	\$2,614.68
	Double	21 Meals	\$4,113.18
	Double	15 Meals	\$3,667.68
	Double	11 Meals	\$3,411.18
RESIDENTIAL SUITE HITCH SUITES (HT)	Triple	21 Meals	\$4,113.18
	Triple	15 Meals	\$3,667.18
	Triple	11 Meals	\$3,411.18
	Triple	21 Meals	\$4,923.18
	Triple	15 Meals	\$4,477.68
	Triple	11 Meals	\$4,221.18

IECP Summer 2019 Sessions B & C July 29 – September 13 Check-in July 28/Check-out September 13			
	Room Type	Meal Plan	Contract Total
CLASSIC RESIDENTIAL HALL HEDRICK HALL (HED)	Triple	21 Meals	\$2,886.74
	Triple	15 Meals	\$2,498.99
	Triple	11 Meals	\$2,275.74
	Double	21 Meals	\$3,579.99
	Double	15 Meals	\$3,192.24
	Double	11 Meals	\$2,968.99
	RESIDENTIAL SUITE HITCH SUITES (HT)	Triple	21 Meals
Triple		15 Meals	\$3,192.24
Triple		11 Meals	\$2,968.99
Triple		21 Meals	\$4,284.99
Triple		15 Meals	\$3,897.24
Triple		11 Meals	\$3,673.99

IECP Summer 2019 11 Week Session July 1 - September 13 Check-in June 30/Check-out September 13			
	Room Type	Meal Plan	Contract Total
CLASSIC RESIDENTIAL HALL HEDRICK HALL (HED)	Triple	21 Meals	\$4,606.50
	Triple	15 Meals	\$3,987.75
	Triple	11 Meals	\$3,631.50
	Double	21 Meals	\$5,712.75
	Double	15 Meals	\$5,094.00
	Double	11 Meals	\$4,737.75
RESIDENTIAL SUITE HITCH SUITES (HT)	Triple	21 Meals	\$5,712.75
	Triple	15 Meals	\$5,094.00
	Triple	11 Meals	\$4,737.75
	Triple	21 Meals	\$6,837.75
	Triple	15 Meals	\$6,219.00
	Triple	11 Meals	\$5,862.75

**\*Please note that not all rooms will look exactly the same as those provided in the sample tours and photos. Meal plan options will be restricted to specifically assigned residential restaurant locations.**

## Bus Information

Company Name	Cost per Ride	Areas Served	30 Day Pass
<p style="text-align: center;"><b>Bruin Bus</b></p>  <p style="text-align: center;"><a href="http://bruinbus.ucla.edu">bruinbus.ucla.edu</a></p>	Free	<p style="text-align: center;">UCLA Main Campus, limited parts of Westwood Village.</p> <p style="text-align: center;"><a href="#">See Map</a></p>	N/A
<p style="text-align: center;"><b>Big Blue Bus (Santa Monica Bus)</b></p>  <p style="text-align: center;"><a href="http://bigbluebus.com">bigbluebus.com</a></p>	<p style="text-align: center;">\$1.25 BBB Only \$1.10 with <a href="#">TAP card</a> \$2.50 Express Line \$2.20 <a href="#">Express with TAP</a></p>	<p style="text-align: center;">Westwood, Santa Monica, West LA, Downtown LA, and other nearby areas.</p> <p style="text-align: center;"><a href="#">See Map</a></p>	<p style="text-align: center;">\$50 BBB Only \$89 BBB + Express</p>
<p style="text-align: center;"><b>Culver City Bus</b></p>  <p style="text-align: center;"><a href="http://culvercity.org">culvercity.org</a></p>	\$1.00	<p style="text-align: center;">Culver City, Westwood and other nearby areas.</p> <p style="text-align: center;"><a href="#">See Map</a></p>	N/A
<p style="text-align: center;"><b>Metro Bus</b></p>  <p style="text-align: center;">&amp; <b>Metro Rail</b></p>  <p style="text-align: center;"><a href="http://metro.net">metro.net</a></p>	<p style="text-align: center;">\$1.75 local only \$2.50 Silver Line/Express Buses</p>	<p style="text-align: center;">Los Angeles County</p> <p style="text-align: center;"><a href="#">See Map</a></p>	<p style="text-align: center;">\$100 Regular \$43 Student</p>

**Single ride payments must be made in cash with exact change or use a pre-loaded Transit Access Pass (TAP) card.** Check out these videos showing how to [purchase](#) and [reload](#) TAP cards at area kiosk. TAP cards may also be purchased at the Ralph's grocery store in Westwood Village. Students attending a 12-week program *may* qualify for a discounted monthly Transit Access Pass (TAP) card from Metro. [Click here](#) to apply online for a College/Vocational TAP card.

## Frequently Asked Questions and Answers

### **How do I apply for UCLA Housing?**

Applications are done online. Please contact the ISO admissions service team for more information on how to apply.

### **Can I get a room by myself?**

No. Due to the high demand for housing, single occupancy rooms are not available for UCLA Housing.

### **Do I need to find my own roommates?**

No, the housing office will assign roommates. However, you have the option to choose your roommate if you both request to live with each other when applying online.

### **Can I get a roommate of a different nationality?**

Roommates are randomly assigned to you. We cannot guarantee the nationality of your roommate.

### **What are my meal plan options?**

You have the option of 11, 15, or 21 meals per week based on the housing contract that you select. Your weekly meals start on Monday and end Sunday. Any unused meals within the week will be lost. Please note that you may eat dinner on the Sunday of check-in.

### **Can I choose not to have a meal plan?**

No, all UCLA housing contracts include a mandatory meal plan.

### **Can I prepare my own meals in my room?**

Cooking is not allowed in rooms. However, students staying in Hitch Suite may use the community kitchen in Hitch Commons.

### **Is there a phone in the room?**

Yes. Telephones are provided in each room and include free campus calls. To make local, long distance, or international calls you will need to purchase a toll-free calling card. We recommend that you bring your own cell phone or purchase a pre-paid cell phone when you arrive.

### **Is internet access included?**

Each housing unit has access to high-speed internet using Wi-Fi or Ethernet connections. The cost is included in your housing contract. You will need to bring your own Ethernet cable to have Ethernet access. Please watch [UCLA's file sharing video](#) before utilizing this service.

### **What activities are available?**

Special events and activities are planned for campus residents throughout the summer. The residence hall has computer labs, study lounges and study rooms, an exercise room, a music room, and a TV lounge for residents.

### **Virtual tours and video for UCLA Housing:**

- [Visit UCLA](#)
- [Residential Suites overview](#)
- [UCLA Housing Map](#)

# UCLA Summer Study Recommended Supply List

Residence hall students will be provided standard bed linens (1 pillow, 1 pillow case, 1 top sheet, 2 blankets) and 1 towel during check-in.

(1 pillow, 1 pillow case, 1 top sheet, 2 blankets) and 1 towel during check-in.

## School Supplies

<input type="checkbox"/>	1-2 Flash drives	<input type="checkbox"/>	Ink pens
<input type="checkbox"/>	Backpack / messenger bag	<input type="checkbox"/>	Highlighters
<input type="checkbox"/>	Notebooks with pre-perforated sheets	<input type="checkbox"/>	Pencil case
<input type="checkbox"/>	Binders/folders	<input type="checkbox"/>	Day-planner
<input type="checkbox"/>	Binder dividers	<input type="checkbox"/>	Passport and I-20
<input type="checkbox"/>	Refillable mechanical pencils and refills	<input type="checkbox"/>	Bank card / credit card

## Dorm Room

<input type="checkbox"/>	Insulated hot/cold beverage tumbler	<input type="checkbox"/>	Reusable fork/knife/spoon set
<input type="checkbox"/>	Extra-large microwave safe coffee mug	<input type="checkbox"/>	Cell phone and charger
<input type="checkbox"/>	Re-sealable snack bags	<input type="checkbox"/>	Sewing kit and safety pins
<input type="checkbox"/>	1- 3 Microwave safe food containers	<input type="checkbox"/>	Flashlight for emergencies

## Bathroom

<input type="checkbox"/>	Personal hygiene supplies	<input type="checkbox"/>	Hanging shower caddy
<input type="checkbox"/>	Toothbrush and toothpaste	<input type="checkbox"/>	Facial tissues
<input type="checkbox"/>	Oral hygiene products	<input type="checkbox"/>	Shower shoes (waterproof sandals)
<input type="checkbox"/>	Hair products	<input type="checkbox"/>	Laundry supplies
<input type="checkbox"/>	Shaving supplies	<input type="checkbox"/>	Compact laundry basket
<input type="checkbox"/>	Sunscreen	<input type="checkbox"/>	Hair dryer
<input type="checkbox"/>	Refillable, squeezable, travel-size bottles	<input type="checkbox"/>	Basic healthcare supplies / medications
<input type="checkbox"/>	Compact first aid kit	<input type="checkbox"/>	Bathrobe

## Wardrobe

<input type="checkbox"/>	T-shirts / casual tops	<input type="checkbox"/>	(Slim) clothes hangers
<input type="checkbox"/>	Casual pants	<input type="checkbox"/>	Bathing suit
<input type="checkbox"/>	Shorts / casual skirts / dresses	<input type="checkbox"/>	Walking shoes
<input type="checkbox"/>	Work-out attire	<input type="checkbox"/>	Flip-flops or sandals
<input type="checkbox"/>	Pajamas	<input type="checkbox"/>	Light jacket / hoodie / sweater

*All of these items are **recommended**.*

*UCLA and UCLA Extension will not be held liable if any of these items are lost, damaged, or stolen.*